



Quality Manual SMQ2020



Based on the SMQ2020, this Quality Manual is registered and updated in the Quality Management IT directory. A copy of this manual is available on our website. In case of divergence between the different translations, the French version shall prevail. Its contents cannot be copied or reproduced without the authorization of Management.

Revision:	A	B	C	D	E		Author:	CE	
Date:	04.04.18	26.06.18	04.05.20	22.02.21	02.03.22		Released:	JCP	
File Address:	X:\10 Qualite\99 SMQ 2020\Qualité\D 10.99.03 Manuel Qualité SMQ2020 EN RevE.docx						Page 1 of 10		

Summary

1. Introduction.....	3
2. Presentation of the company.....	3
2.1. Markets	4
2.2. Primary technologies.....	4
3. Organisation structure	5
3.1. The 4 pillars of the process.....	5
3.2. Process mapping	6
3.3. Objectives table.....	6
3.4. Risk management.....	6
3.5. Dashboard.....	6
4. Document Management	7
5. Management.....	7
5.1. Management Commitment	7
5.2. Executive committee.....	8
5.3. Quality	8
6. Interaction between processes.....	8
7. Postscript.....	9
Appendix A Exclusions to ISO standard 13485:2016.....	10

1. Introduction

This quality manual SMQ2020 describes the general provisions implemented in the company.

It defines the principles of the system and introduces the approach of each process.

Process management is done through the SMQ2020 application. This was put in place with the goal to make the entire system available to all collaborators in real time. It has been developed in-house and is continuously improved as needed.

Hybrid SA is certified according to standards ISO 9001: 2015 and ISO 13485: 2016. The company does not cover the full scope of ISO 13485: 2016, exclusions are listed in Appendix A of this manual.

This manual has been written and approved collectively by Management and members of the Executive Committee.

2. Presentation of the company

Hybrid SA is ideally situated on the shores of Lake Neuchâtel, the birthplace of microtechnology and microelectronics. Founded in 1989 by Mr. Claude Gaille, the company was acquired in 2004 by employees under an MBO.

In pursuing activities related to the development of complex microelectronic circuit assembly, Hybrid SA has committed itself to serving its customers efficiently by capitalising on the expertise of each employee.



2.1. Markets

- Industrial (sensors, actuators, drivers, ...)
- Medical
- Scientific (institutions and schools)
- Aeronautics and aerospace
- Horology

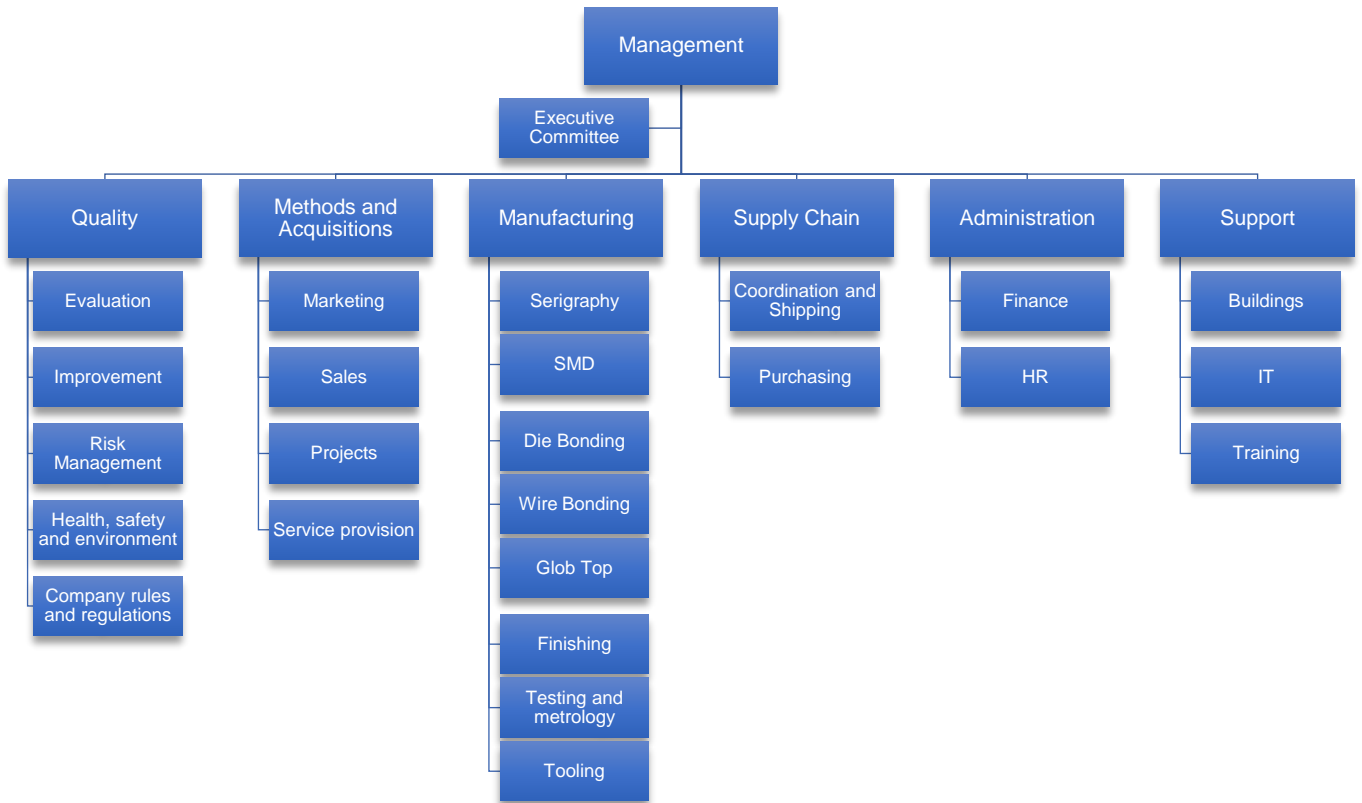
2.2. Primary technologies

- Screen printing of thick film circuits on ceramic
- Assembly of surface mount components (SMD)
- Chip on board (die bonding / wire bonding / encapsulation)
- Flip chip (bumping and assembly)
- Termination work (mounting connectors, cables, through mounts, etc.)
- Electrical function test (developed in collaboration with the customer)

3. Organisation structure

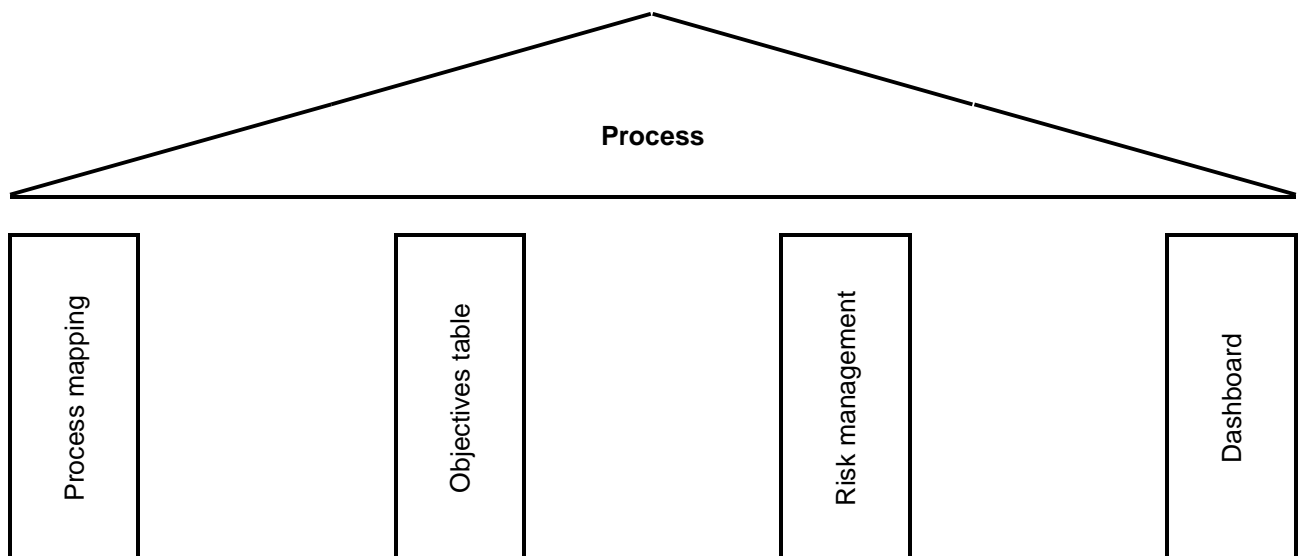
The company is structured by processes.

All activity is linked to a process reflected in the chart below.



3.1. The 4 pillars of the process

All processes and subprocesses have the same management structure. This structure is based on four pillars: cartography, the objectives table, risk management and the dashboard. Each of these pillars has a very specific function described below.



3.2. Process mapping

Process mapping is a tool for understanding the process. It is composed of several elements.

- Description of the process and its objectives
- Identification of risks
- Input elements (materials, resources, requirements)
- Output elements (product, service, decision)

It is a useful prerequisite for risk management.

3.3. Objectives table

The objectives table is a planning tool. Initially it describes the overall objectives of the process to achieve long-term results. Secondly, it leads to more precise objectives and the identification of needed resources along with their scheduling. These objectives are established to meet customer requirements and to bring improvements to the process in accordance with company policies.

3.4. Risk management

Risk management is a decision support tool.

It consists of continuously analysing and evaluating events that would prevent the achievement of objectives. The risks are then treated according to one of the following 4 strategies:

- Removal
- Reduction
- Transfer
- Acceptance

3.5. Dashboard

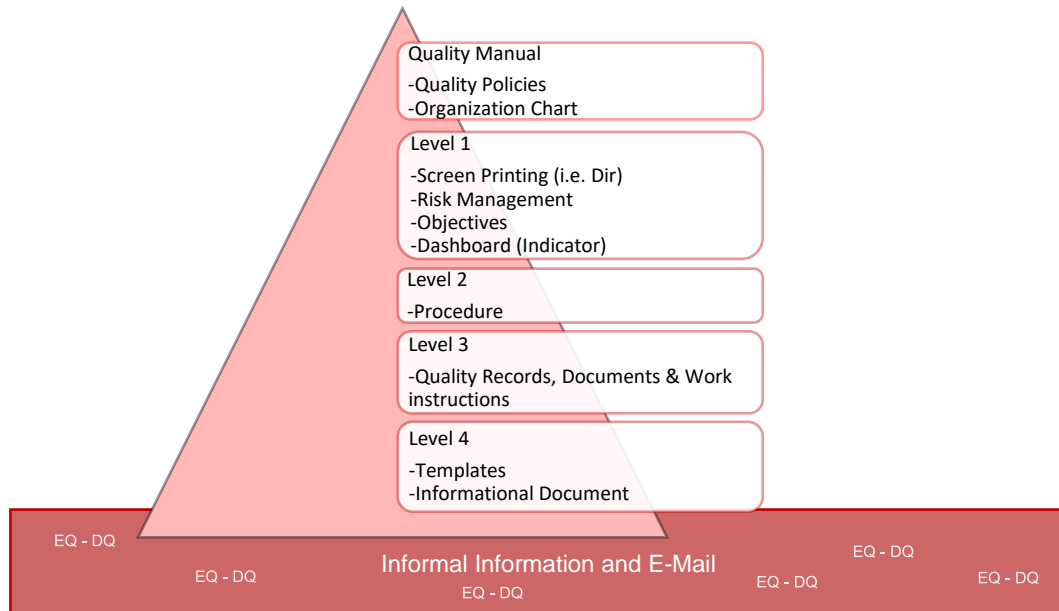
The dashboard is a process monitoring and management tool.

Its function is to enable monitoring and easy exploitation of relevant data concerning a process. This data, also called performance indicators, provides information as to how the process is working to predict, decide and act.

4. Document Management

Document management is organised in a hierarchical manner.

The Quality Manual SMQ2020 is, along with the Quality Policy and Process Flowchart, at the top of this hierarchy.



Even informal information is considered a faint signal that should not be overlooked. This draws attention to potential events that are evaluated on a case-by-case basis.

All documents are accessible from the SMQ2020 application.

Process owners are responsible for documenting them. They continually oversee their updates.

5. Management

Management defines strategic choices in accordance with guidelines set by the Board of Directors. It drives the company, establishes, or sees that structures and methods are established to achieve set objectives. Furthermore, it gathers, manages, and allocates resources necessary for the realisation of company projects.

5.1. Management Commitment

Management is committed to ensuring that customer requirements along with legal requirements are identified, understood, and met.

It is committed to ensuring that the quality management system is effective and in line with the company's Quality Policy. It ensures that the resulting requirements are integrated into all business processes.

For each process, Management works to ensure that resources are available and encourages the development of risk management and continuous improvement.

Management is represented by the Quality Manager.

5.2. Executive committee

The Executive Committee is a platform for communication and decisions.

It meets monthly to consider the areas of finance, operations, resources, and quality.

It consists of process managers chosen for their seniority and their strategic level in the process. Other participants may be called upon to participate from time to time according to the subjects to be addressed.

5.3. Quality

On behalf of the Management, the Quality process ensures the rational and functional implementation of a Quality Management System appropriate to the company.

It monitors and verifies its integration and application in all processes.

To do so, it regularly conducts internal audits, processes feedback from external audits, from customer feedback along with internal and external non-compliance reports.

Quality process employees direct the system by working closely with process owners at all levels of the organisation.

It challenges Management in its strategic and systemic commitments. It oversees planning and conformity of the quality of the content of the annual management review.

6. Interaction between processes

To respond effectively to customer demand, the valorisation of their products is done through the coordinated implementation of processes:

- The "Projects" process establishes the specifications of the product, in collaboration with the customer.
- The "Purchasing" process ensures the availability and supply of components.
- The "Manufacturing" process implements technical operations required to produce the product.
- The "Quality" process ensures that the realisation of the product evolves in a controlled environment.
- The "Coordination and Shipping" process manages the entry and administration of orders as well as logistics related to shipping.

7. Postscript

Control over advanced processes and technologies combined with an attentive approach leads to success in our quest for customer satisfaction.

A culture of continuous improvement engages the company on a path of excellence. To do this, Hybrid SA takes care to involve each team member by supporting and empowering them in the tasks entrusted to them.

Hybrid SA is founded on discipline, efficiency, and integrity. These immutable values assure long lasting benefits to customers, suppliers, and employees alike.

Chez-le-Bart, March 2022

The Management

Appendix A Exclusions to ISO standard 13485:2016

Hybrid SA does not market or manufacture products on its behalf.

Hybrid SA provides subcontracting services for assembling electronic subassemblies. It does not do product design and development.

The following chapters of ISO 13485:2016 are excluded:

- 4.2.3 Medical device file
- 6.4.2 Contamination control
- 7.3 Design and development
- 7.5.2 Cleanliness of product
- 7.5.3 Installation activities
- 7.5.4 Servicing activities
- 7.5.5 Particular requirements for sterile medical devices
- 7.5.7 Particular requirements for validation of processes for sterilization and sterile barrier systems
- 7.5.9.2 Special requirements for implantable medical devices
- 8.2.3 Reporting to regulatory authorities